

Danish National AtoN Character Data Base



IALA ENG Committee
2th Session, May 18 – 22, 2015
St. Germain en Laye, France

Jørgen ROYAL PETERSEN
Senior Engineer Aids to Navigation
Danish Maritime Authority (DMA)



Danish National AtoN Character Data Base

- Not only a AtoN Character Data Base
- Mainly a Maintenance Management and Information System
- Aged ORACLE Data Base
- Large system where DMA today only use a small part – **mainly for floating aids**
- An on going project to develop a new Maintenance Management and Information System including all AtoN in the Kingdom of Denmark

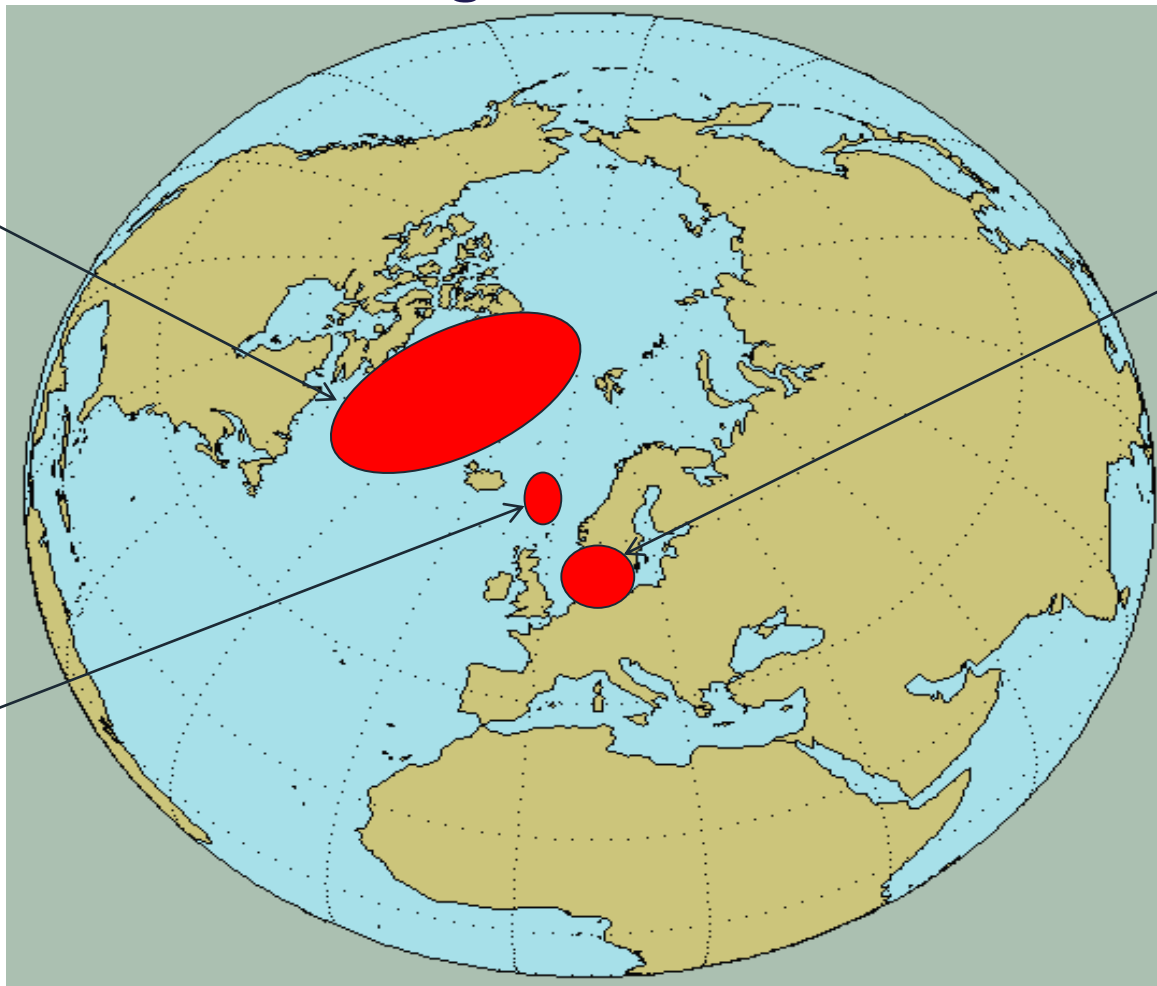
The Kingdom of Denmark



Greenland
(56,500)



Faroe Island
(49,000)



Denmark
(5,700,000)

Aids to Navigation

- **Denmark**

- 196 (189) lighthouses (16 off shore lighthouses equipped with Racon)
- 400 light buoys (12 equipped with Racon, 1 equipped with AIS)
- 1,200 buoys (daymarkers)
- 40 landbased daymarkers
- 3 DGPS stations

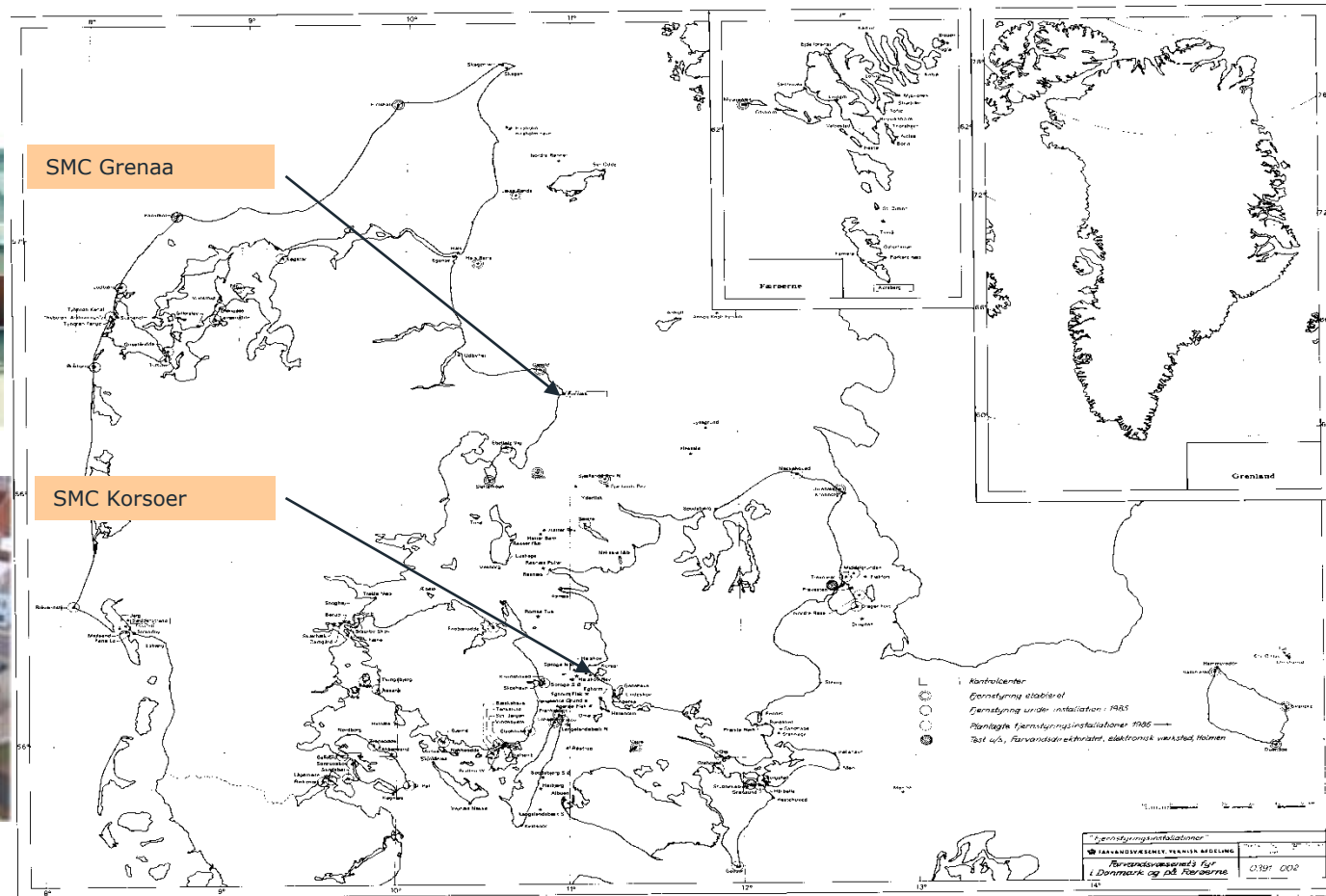
- **Faroe Island**

- 27 lighthouses
- 1 Loran-C station (managed by DMA for France)
- 1 DGPS station

- **Greenland**

- 63 lighthouses
- 22 landbased Racon stations
- 530 landbased daymarkers

Service and Maintenance Centre in Denmark



Buoy Tenders



Poul Løwenørn (2001)
Based in Korsoer

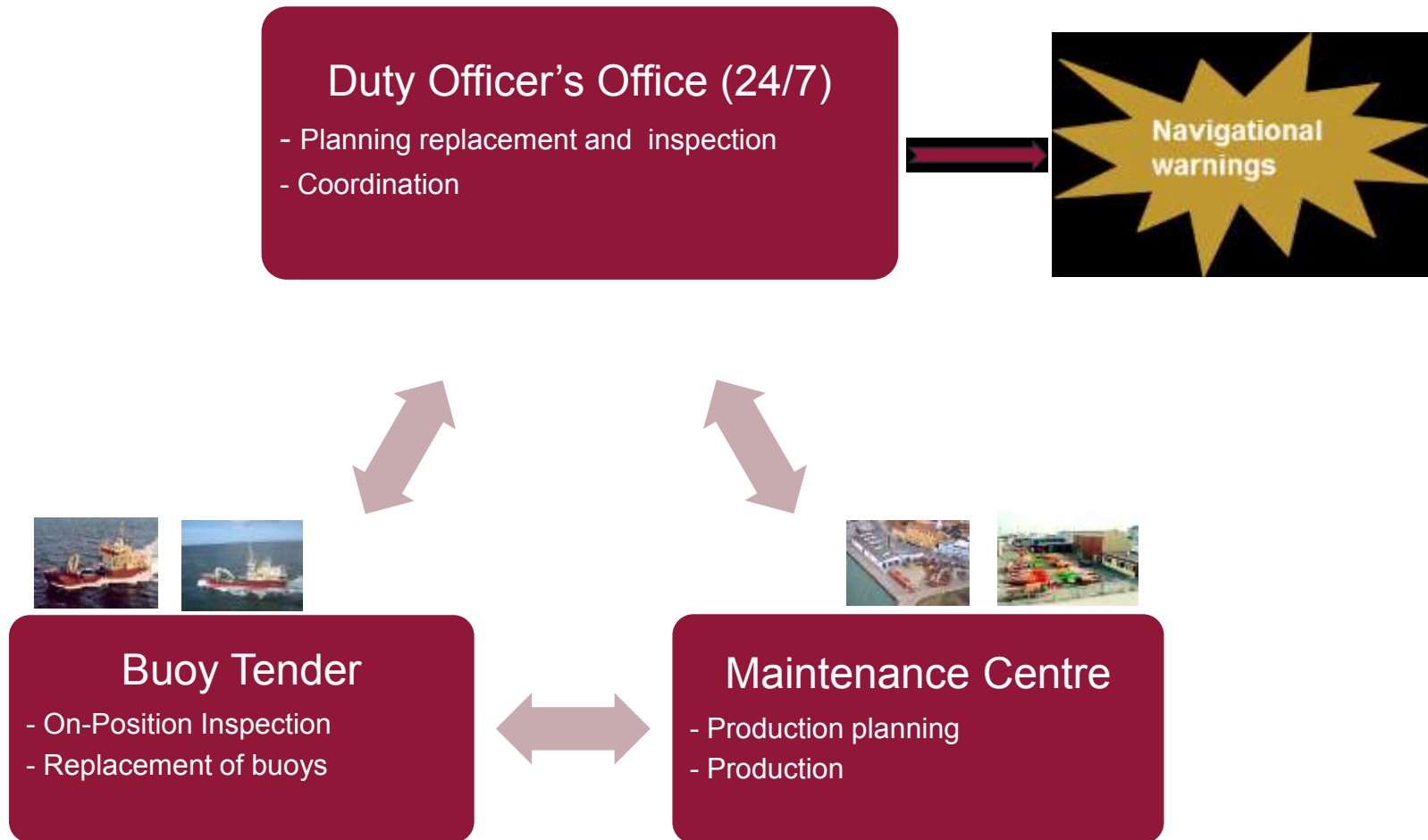


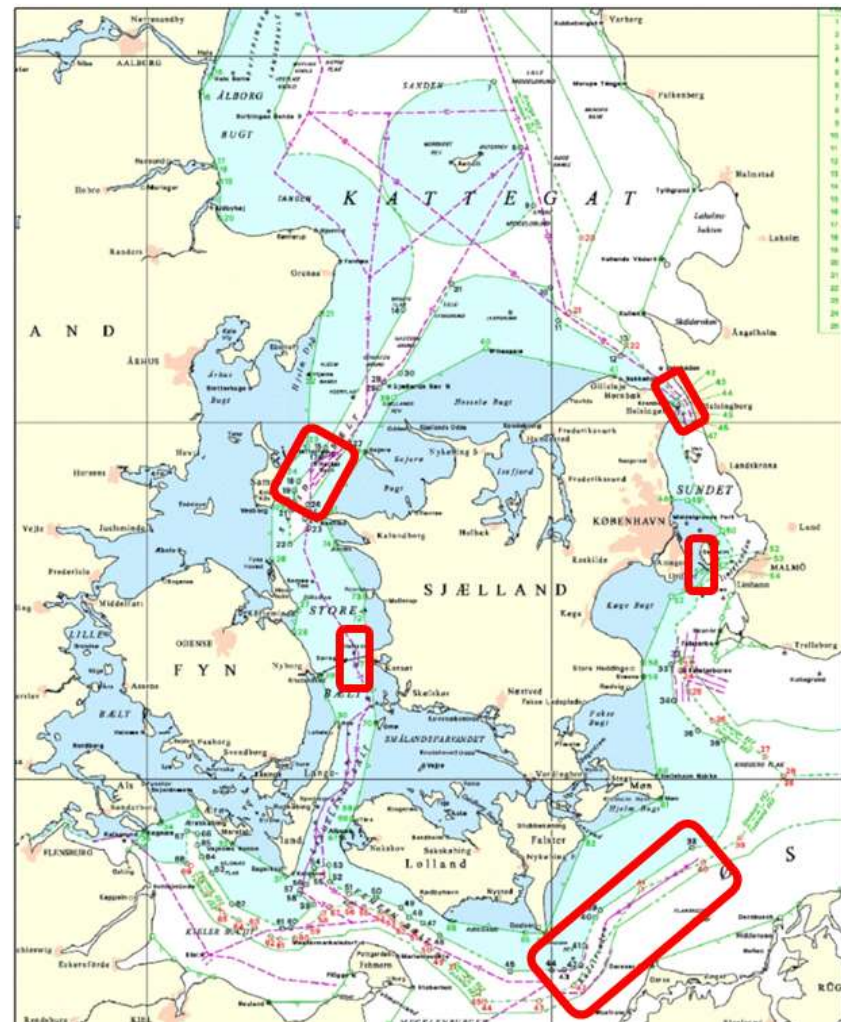
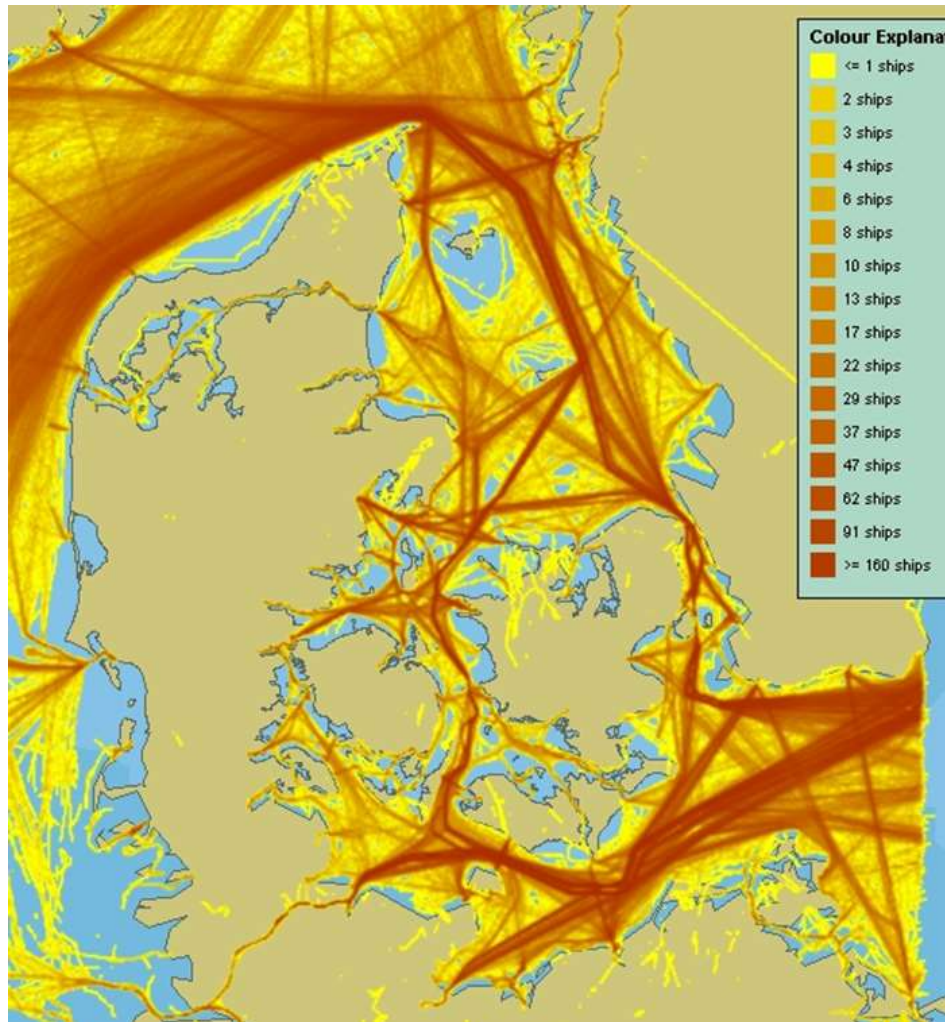
Jens Sørensen (1994)
Based in Grenaa

Lorry with Trailer for land transport



Maintenance Management and Information System

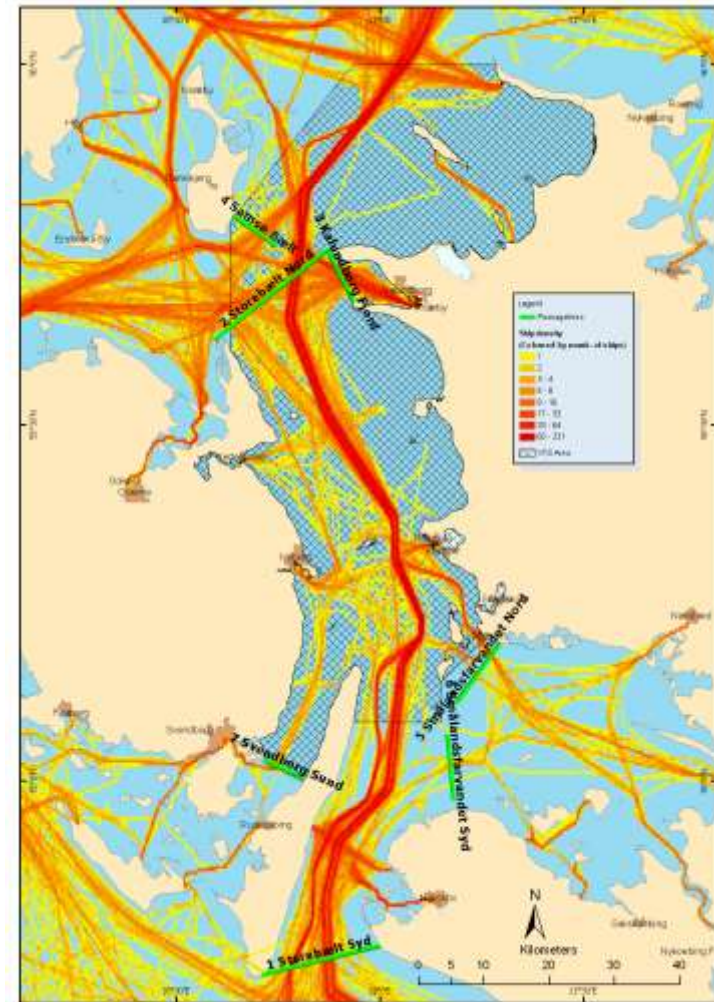




Traffic today

- Traffic increasing
- More than 20,000 Vessels/year though Great Belt Area
- Or in average 3 Vessels/hour

AIS, Traffic pattern over 9 days



Floating AtoN

On position inspection (mooring, shackles, chain, color, top marker, reflective material etc.)

- **Every 15 month**

Replacement frequency

- **Red buoys – 42 month \approx 3,5 year**
- **Green, yellow, yellow/black, buoys – 60 month \approx 5 year**

Maintenance Management and Information System

The system provides information on each AtoN station:

- Recommended buoy size for the specific AtoN station,
- Type of buoy (cardinal, lateral, colour etc.),
- Mooring requirement (chain dimension, sinker size, chain lengths etc.),
- Lantern requirement
- **Flash character**
- Battery requirement (primary batteries scaled for the scheduled service period and flash %),
- Battery calculation program
- Racon,
- AIS,
- Information on inspections status during the service period,
- Information on fails and changes occurred during the service period
- In addition, the system provides information on next withdraw for service (this part preparing the effort and schedules for buoy tenders and the production schedule for the maintenance centre.

http://frvlan36.fomfrv.dk/reports/nwservlet?report=d:\apps\afm_prod\reports\AFMK0040.rdf&u Oracle Application Server For... fomfrv.dk

Skifteseddel Farvandsvæsenet

Afm stationsnr. : 1011-5-90 Afm Navn : Rute T 8
Fyrkarakter : F1.R.3s (0,3+2,7) Lystidspct : 10 Farve : R
Topbetegn : Raconkode Dybde i meter : 23

Næste
Fastlagt tilsynsdato : Næste tilsynsdato : 03-10-2015 Beregnet udsk. : 25-04-2015 Fastlagt udsk. :


Kæder
Kædelængde 1 : 64 Førlighed 1 : 32 Kædelængde 2 :
Førlighed 2 : Antal sjækler :

Sten
Sten1 : 3000 KgC Sten2 :

Tilset **Udlagt**
Den : 03-08-2014 Af : Poul Løwenørn Den : 25-10-2011 Af Poul Løwenørn :
:

Anbefalinger
Kædedim1 : Kædedim2 :
Kædelængde1 : Kædelængde2 :
Sten1 : Sten2 :

Anbefalinger

 08:25 17-05-2015

http://frvian36.fomfrv.dk/reports/rwserver?report=d:\apps\afm_prod\reports\AFMK0040.rdf&u
Oracle Application Server For...
fomfrv.dk

Anbefalinger

Størrelse : 11

Batterikapacitet : 2 stk. CT 3 (11.000 Wh)

Mærket : 8

Racontype :

Lanterne : S-34-A

Vægtringe : 3 VR+1BV (DG 24-04-2015)

Topbetegnelsestype :

Position

Bredde

56°19,597

Længde

11°26,143

Løbenummer	Watt Forbrug (Rør)	Volt (Rør)	Forbrug (Pære)	Volt (Pære)	Kapacitet	Dato Restkap.	Komponenttype
TØN-11-106							Tønde
P-25-B-060	7	24					Diode Lanterne
90-156					15400	27-08-2010	Batteri

Ny tønde fra Korsør/grenaa


Dato: _____

TØN- _____

Gammel tønde fra skib

Skiftedato _____

Afleveret til _____



08:27
17-05-2015

http://frvian36.fomfrv.dk/reports/rwservlet?report=d:\apps\afm_prod\reports\AFMK0040.rdf&u Oracle Application Server For... fomfrv.dk

TØN-11-106						Tønde
P-25-B-060	7	24				Diode Lanterne
90-156			15400	27-08-2010		Batteri

Ny tønde fra Korsør/grenaa

Dato: _____

TØN- _____

Farve : _____

Batt. nr. : _____

Kap. : _____

Spænd : _____

Elektr : _____

Rør : _____

Racon : _____

Sign : _____

Bemrk : _____

Gammel tønde fra skib

Skiftedato _____

Afleveret til _____

Spænd. _____

Losset ved _____

Sign.: _____

Bemrk.: _____

08:29
17-05-2015

Skifteseddel

Færveidsskiftet

Afmærkning: 1341-S-538

Afmærkning: Drogden, grævede sø, 18

Fyrtårnsnr.: F1, R, 5a (6, 5-4, 5)

Lyslidspl.: 10

Farve: 3

Tøbetegn:

Raconkode

Dybde (m): 9, 8

Næste

Fæstet skiftedato:

Næste fæstet dato: 24-08-2015

Beregnet udløb: 29-11-2019

Fæstet 14-10-2014
udløb

Kæder

Kædelængde 1: 25

Færdighed 1: 32

Kædelængde 2:

Færdighed 2:

Antal skæder:

Sten

Sten1: 5000 5-ere

Sten2:

Tilset

Dato: 24-04-2014

At: Poul Løvenørn

Udlagt

Dato: 09-05-2012

At: Poul Løvenørn

Anbefalinger

Kædelængde1:

Kædelængde2:

Kædelængde1:

Kædelængde2:

Sten1:

Sten2:

Anbefalinger

Størrelse: 18

Løstørrelse: 8-14-A

Beholdningskapacitet: 2 stk. CT 3 (11.000 Wh)

Vægt: 4 kg (GSR 67-05-2012)

Mærke: 14

Tøbetegnstype:

Racontype:

Position

Bredde:

Længde:

55°33,140

12°42,518

Lebenummer

Watt Forbrug (Var)

Volt (Var)

Forbrug
(Pere)

Volt
(Pere)

Kapacitet

Dato RestKap.

Komponenttype

TBR-15-811

2-14-A-1099

50-326

4

24

11000

07-05-2013

Tænde

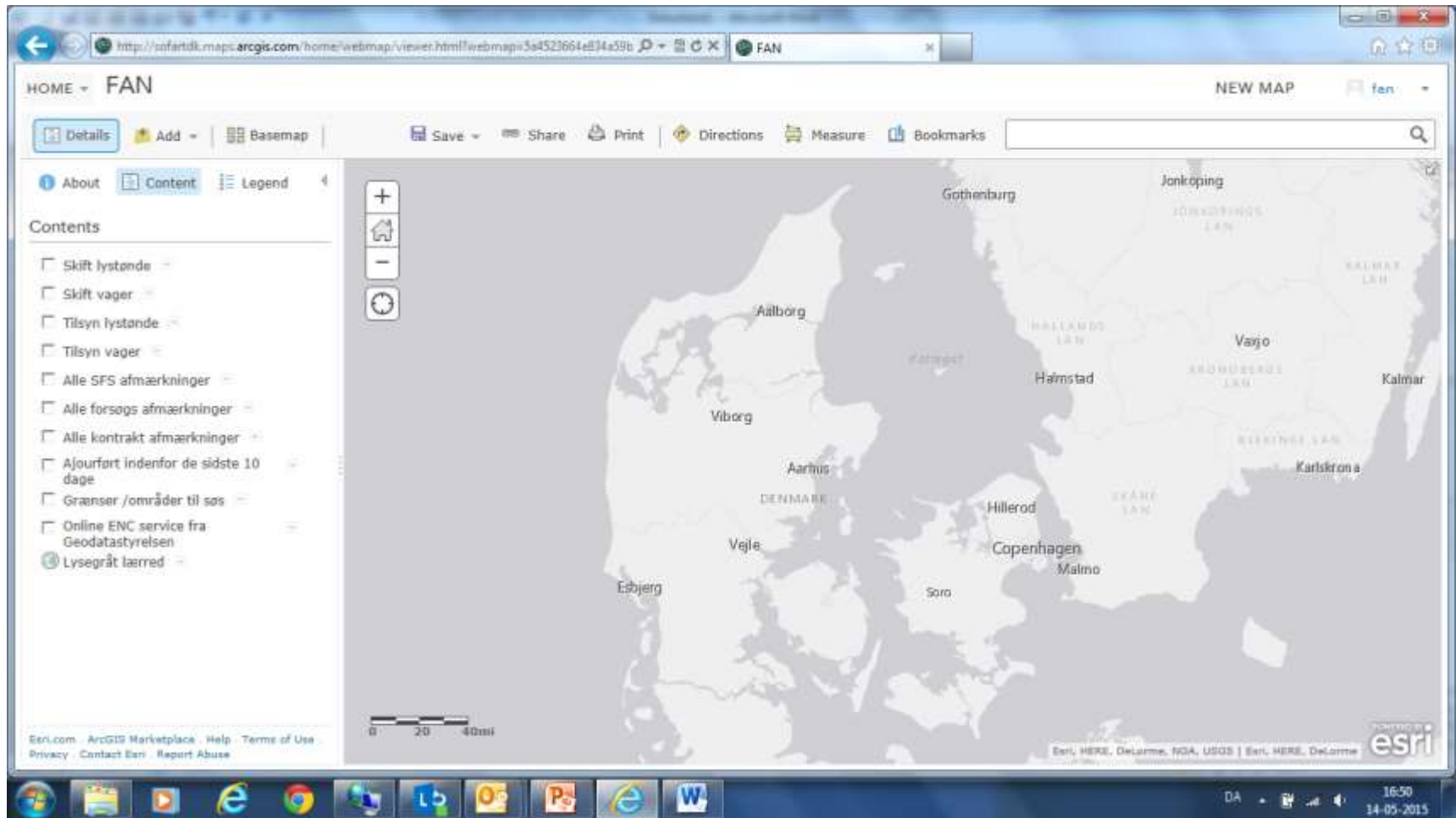
Diode Læmper

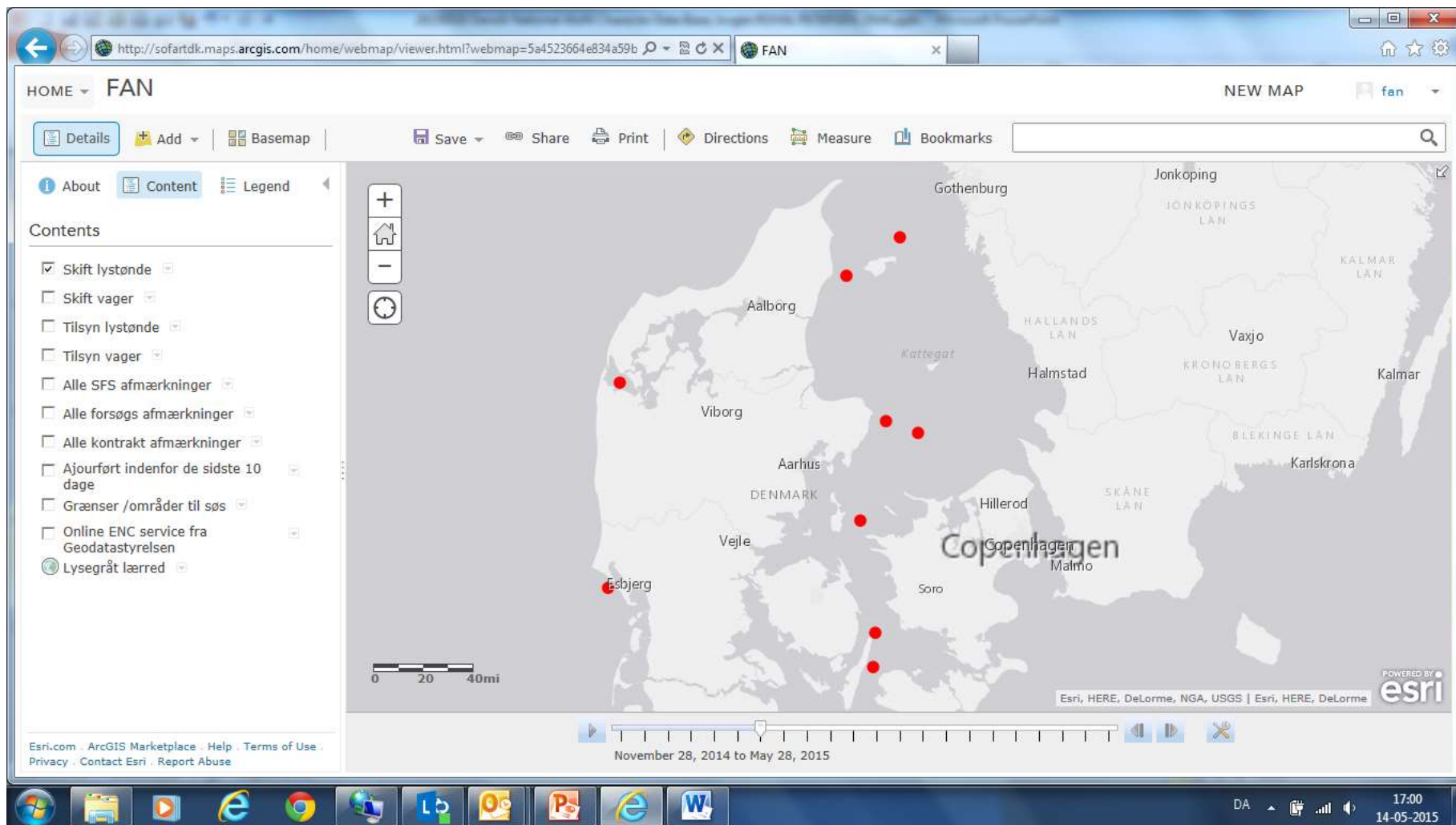
Batteri

Ny tænde fra Korsør/grenaa
 Dato: 2-10-2014
 TØN: 31-006
 Farve: R
 Batt. nr.: 40-003
 Kap.: 18300
 Spænd.: 23,9-25,63
 Elektr.:
 Ret: S-34-AL-2143
 Racon:
 Sign.:
 Bemrk.:
 10/10

Gammel tænde fra skib
 Skiftedato: 11/10-2014
 Afleveret til: 10/10
 Spænd.: 26,5 / 22,2 V
 Løst ved: 10/10
 Sign.: RML
 Bemrk.:
 10/10

GIS as a additional planning tool







DANISH MARITIME AUTHORITY

The screenshot displays the ArcGIS Online web application interface. At the top, the browser address bar shows the URL: <http://sofartdk.maps.arcgis.com/home/webmap/viewer.html?webmap=5a4523664e834a59b>. The main map area shows a map of Denmark with several red circular markers indicating specific locations. A pop-up window titled "Skift lystønde: 1011-5-90" is open, displaying the following attributes:

Skift lystønde: 1011-5-90	
AFM NR	1011-5-90
AFM NAVN	Rute T 8
BREDDE	56gr 19.597 N
LAENGDE	11gr 26.143 E
Skift	April 25, 2015
BEMAERKNING FASLAGT SKIFT	
SKIFTNINGSFREKVENS	42
KOMPONENT	TØN-11-106
ANBEFALET_TYPE	11

The interface includes a top navigation bar with "HOME" and "NEW MAP" options. A left sidebar contains tabs for "Details", "Add", "Basemap", "About", "Content", and "Legend". The "Contents" panel on the left lists various map layers, including "Skift lystønde", "Skift vager", "Tilsyn lystønde", "Tilsyn vager", "Alle SFS afmærkninger", "Alle forsøgs afmærkninger", "Alle kontrakt afmærkninger", "Ajouført indenfor de sidste 10 dage", "Grænser /områder til søs", "Online ENC service fra Geodatastyrelsen", and "Lysegråt lærred". The bottom of the interface features a timeline slider set from "November 28, 2014 to May 28, 2015". The Esri logo and "POWERED BY esri" text are visible in the bottom right corner.

Thank you very much for your attention

